



# **SUPER HD VIDEO SECURITY SYSTEM**

Quick Start Guide



# Troubleshooting

If you are experiencing video loss, verify that all cables are properly and securely connected to the DVR.

- Check your Network Connection
- Check your Username and Password
- Restart the DVR if you have trouble connecting.
  - ✓ Main Menu > Shutdown > Enter Username & Password > Click "Reboot"
  - ✓ To reset your DVR to factory settings, refer to the User manual.



For more information about your product, please download the User Manual from "[wisenetlife.com](http://wisenetlife.com)".



## Need Help?

Contact our Technical Support Team  
**844-WISENET**  
**(844-947-3638)**  
Open 7 days a week, 9AM - 9PM EST

# DVR Setup

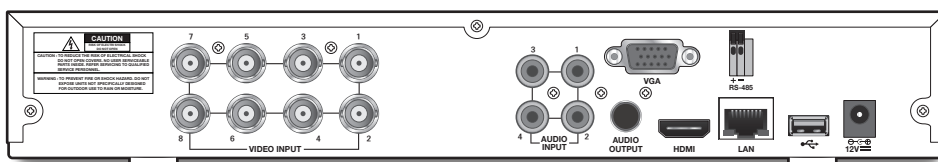
## KIT Model

SDH-B84040BF/SDH-C84080BF/SDH-C85100BF

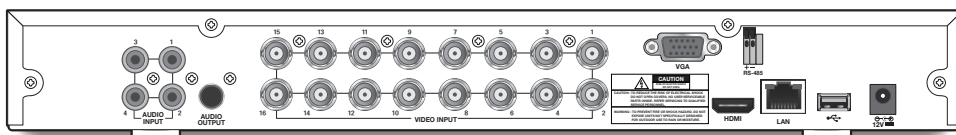
## DVR Model

SDR-B84300/SDR-B85300

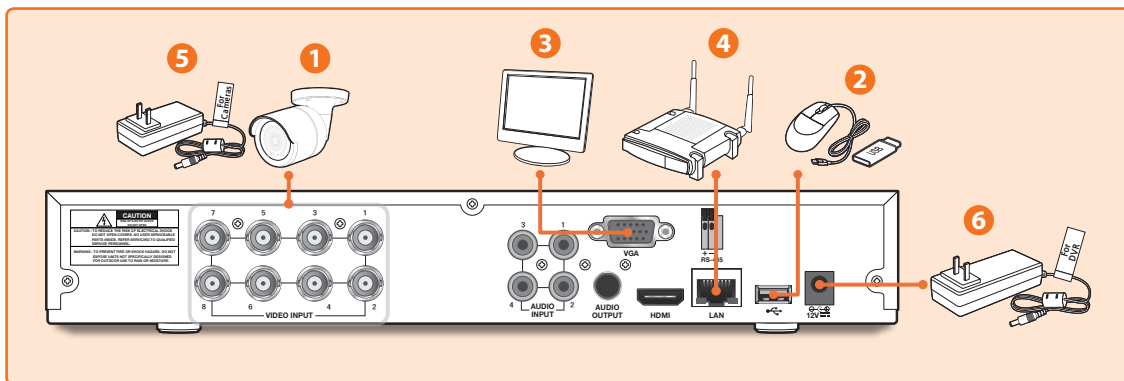
- 8CH DVR



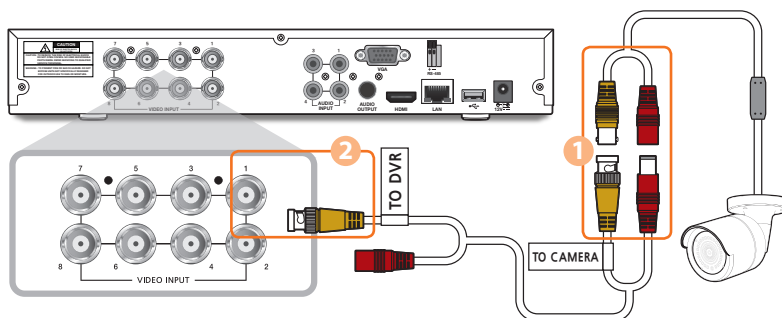
- 16CH DVR



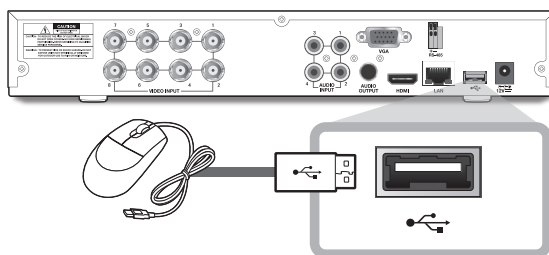
# DVR Setup



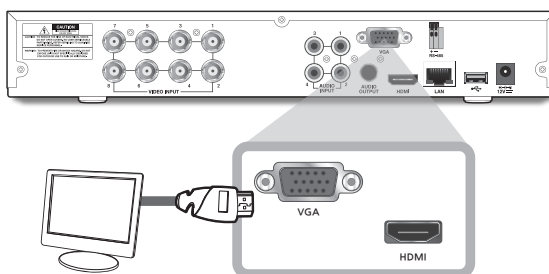
1. Connect the camera's video input (yellow) and power supply (red) connectors to the BNC extension cables. Then connect the BNC video input (yellow) to the video input port on the rear panel. (Repeat Step 1 for the remaining cameras.)



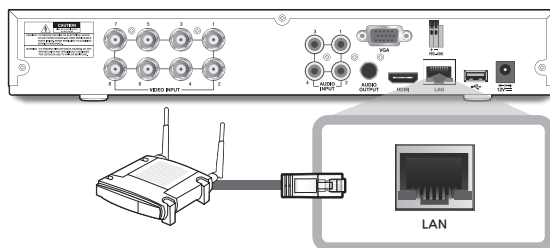
2. Connect the mouse to the USB Port on the front or back panel of the DVR.



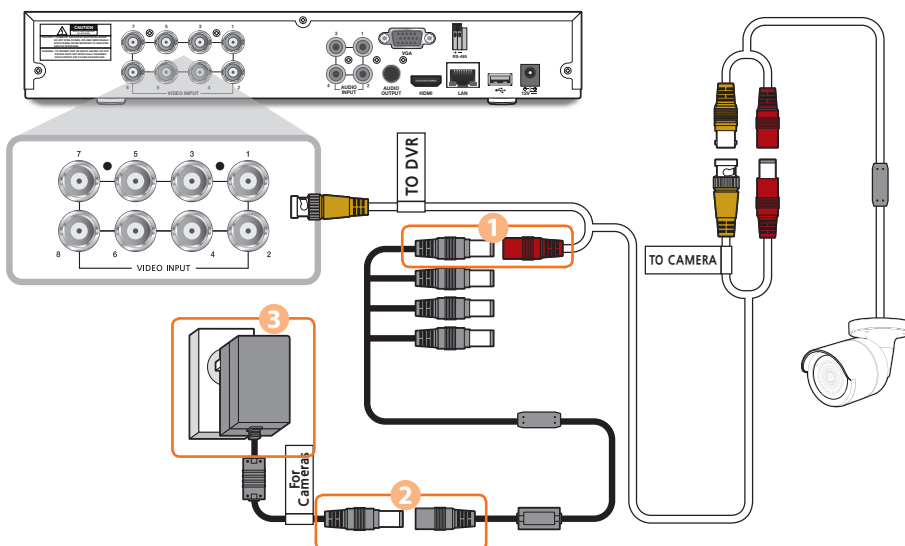
3. Depending on the monitor port, connect the HDMI or VGA cable from your monitor to the HDMI or VGA Port on the rear panel.



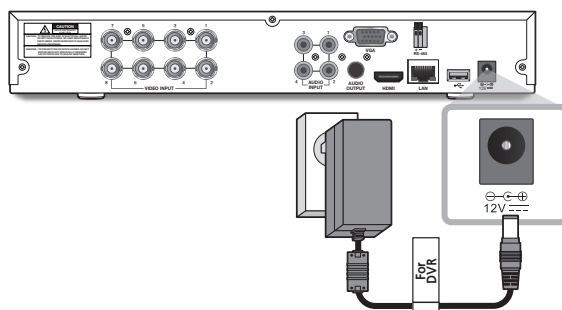
4. Connect one end of the Ethernet cable into your router's LAN port, and the other end of the cable to the Ethernet port on the rear panel.



5. Connect the camera's power supply (red) to the power splitter. Then connect the other end of the power splitter to the power adapter for Cameras and plug in the adapter to a wall outlet. (Repeat Step 5 to connect the cameras to the second set of power splitter and power adapter.)



6. Connect the power adapter for DVR to the DC 12V port on the rear panel and the power plug into a wall outlet. The DVR will automatically power on and the startup wizard will appear on your monitor.

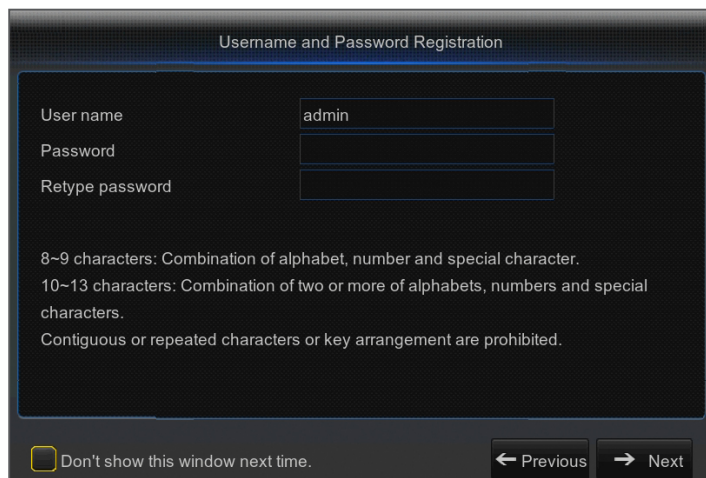


# Startup Wizard Guide

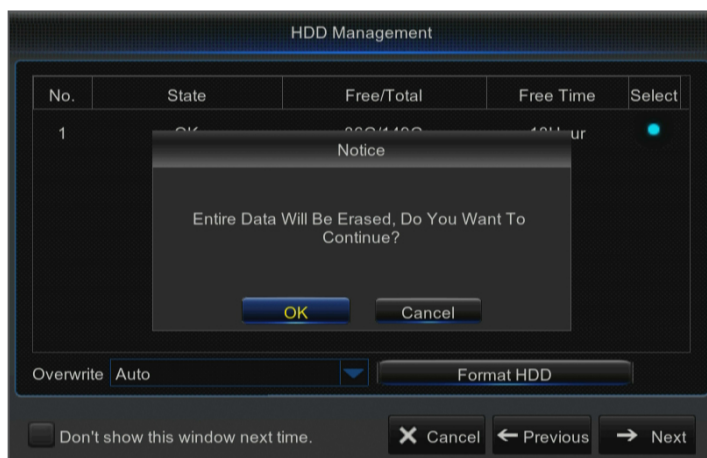
1. Once the setup is complete, the DVR will power on and display the Startup Wizard. Click "Next".



2. Right-click on the mouse within the text box for the digital keyboard to create a Username and Password for your DVR. Retype password. Click "Next". Password MUST be 8-13 characters long.
  - If the password is 8~9 characters long, it should contain a combination of letters, digits and special symbols.
  - If it is 10~13 characters long, it should contain at least a combination of two types of characters. 4 or more contiguous or repeated characters or key arrangement are prohibited, for example 1111, 1234, abcd, qwerty.

The image shows a software window titled "Username and Password Registration". It contains three text input fields: "User name" with the text "admin" entered, "Password", and "Retype password". Below the input fields, there is instructional text: "8~9 characters: Combination of alphabet, number and special character." and "10~13 characters: Combination of two or more of alphabets, numbers and special characters. Contiguous or repeated characters or key arrangement are prohibited." At the bottom left, there is a checkbox labeled "Don't show this window next time." which is unchecked. At the bottom right, there are two buttons: "← Previous" and "→ Next".

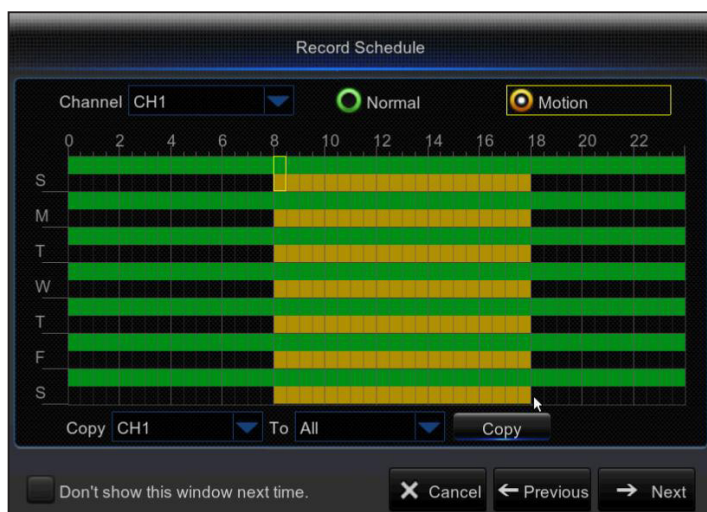
3. New Hard Disk Drive(s) (HDD) must be formatted before use. Click "Select" to choose the unformatted HDD listed under HDD Management. Select Off/Auto to Overwrite HDD. Click "Format HDD". When done formatting HDD, Click "Next". For more information, refer to the User Manual.



#### 4. Video Recording Schedule

Select the channel and type of scheduled recording mode, Normal or Motion. To set/unset the recording schedule for the selected recording mode and channel, left-click on the mouse on the time to start/end recording, hold down the mouse while you drag across the area you wish to highlight/unhighlight. Click "Next".

- **No Highlights** : No Recording
- **Green Highlight** : Normal Recording
- **Yellow Highlight** : Motion Recording
- Select the channel schedule recording you wish to copy and apply it to another channel or all channels. (Optional)



# Startup Wizard Guide

5. General System Configuration. Set the date, time, date format, time format, language, video format, and menu timeouts for the DVR. Click "Next".

General System Configuration

Date	04/02/2016
Time	10:53:44
Date Format	MM/DD/YY
Time Format	24Hour
Language	ENGLISH
Video Format	NTSC
Menu Timeouts	1Min

Don't show this window next time.

6. To remotely access recordings via the Wiseview app or port forwarding, you must connect the DVR to the router using an Ethernet cable. Click "Next".  
Set the Network Configuration for the DVR – DHCP, PPPoE, or Static Mode (For more information, refer to the user manual).
  - DHCP Mode: Router will automatically list the Network's IP address to the DVR.  
If the DVR fails to obtain an IP address, refer to the User Manual. If the problem still cannot be resolved, please contact technical support.

Network Configuration

PPPoE  DHCP  Static

Client Port 09000 HTTP Port 00080

IP Address 192.168.002.151  
Subnet Mask 255.255.255.000  
Gateway 192.168.002.001  
DNS1 221.005.088.088  
DNS2 008.008.008.008

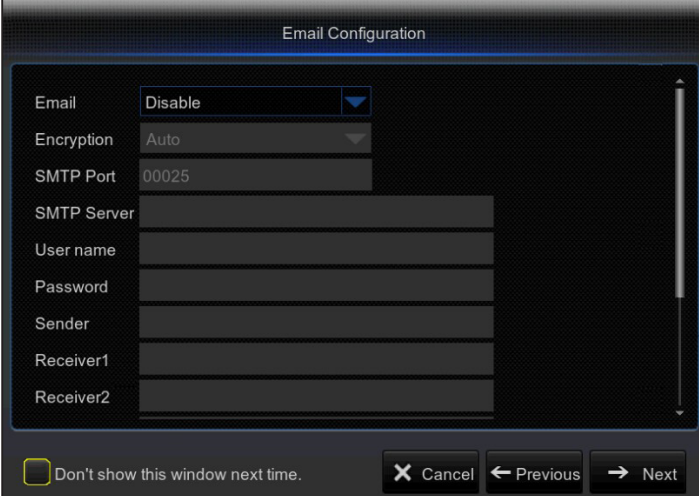
UPNP Disable

Don't show this window next time.



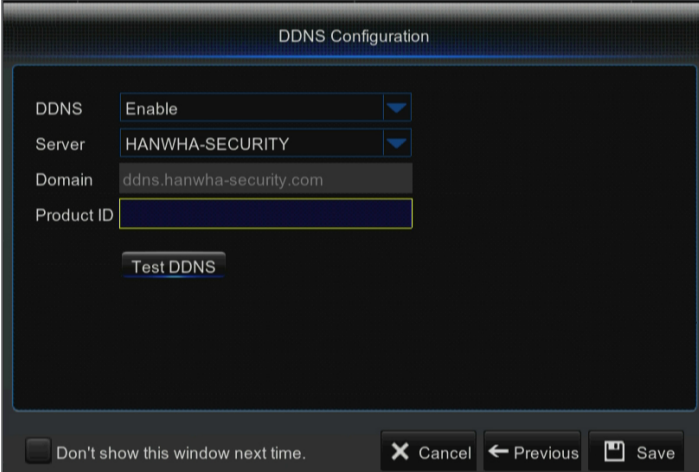
## Optional Steps

7. Enable/Disable Email Setting to send or receive email alerts from your DVR.



The 'Email Configuration' window is a dark-themed dialog box. It features several input fields: 'Email' (a dropdown menu set to 'Disable'), 'Encryption' (a dropdown menu set to 'Auto'), 'SMTP Port' (a text box containing '00025'), 'SMTP Server', 'User name', 'Password', 'Sender', 'Receiver1', and 'Receiver2' (all empty text boxes). At the bottom left, there is a checkbox labeled 'Don't show this window next time.' which is currently unchecked. At the bottom right, there are three buttons: 'Cancel' (with an 'X' icon), 'Previous' (with a left arrow icon), and 'Next' (with a right arrow icon).

8. DDNS : To use the web viewer to access your DVR, refer to the User Manual for further instructions. Setting this up will enable you to do port forwarding, where you can access your videos and camera recordings from any computer, anywhere.
- ※ Click "Save" once you finished setting up the startup wizard.



The 'DDNS Configuration' window is a dark-themed dialog box. It contains the following fields: 'DDNS' (a dropdown menu set to 'Enable'), 'Server' (a dropdown menu set to 'HANWHA-SECURITY'), 'Domain' (a text box containing 'ddns.hanwha-security.com'), and 'Product ID' (an empty text box). Below these fields is a 'Test DDNS' button. At the bottom left, there is a checkbox labeled 'Don't show this window next time.' which is currently unchecked. At the bottom right, there are three buttons: 'Cancel' (with an 'X' icon), 'Previous' (with a left arrow icon), and 'Save' (with a floppy disk icon).

# Main Interface

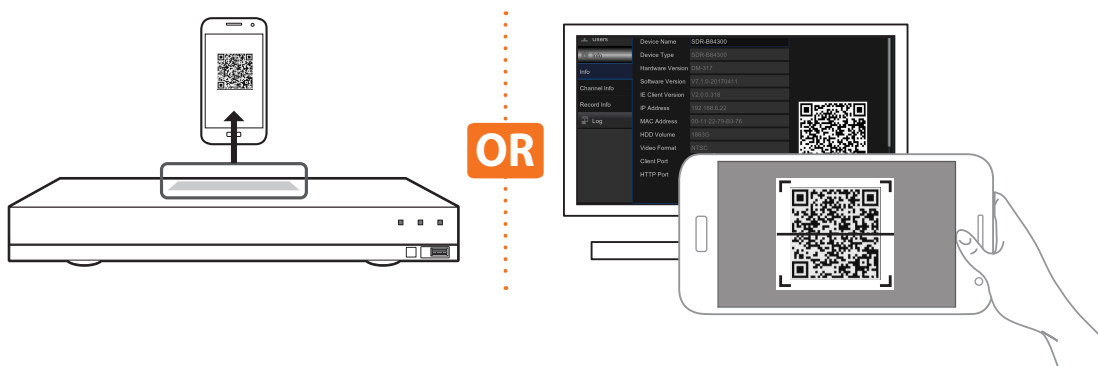


<b>1</b> Camera Type	"A" means "AHD camera". Absence of it means 960H camera.
<b>2</b> Date & Time	Displays current date and time.
<b>3</b> Channel Name	Displays channel name.
<b>4</b> SAMSUNG Logo	Samsung logo is displayed only when there is video loss.
<b>5</b> Image Capture	Capture snapshots of current live feed.
<b>6</b> Manual Recording	Enable/Disable Manual Recording.
<b>7</b> Quick Playback	Playback the last 5 minutes of the video.
<b>8</b> Digital Zoom-In	Click and drag the mouse cursor to select a frame of the current video to zoom in.
<b>9</b> Channel Color Setting	Set the hue, brightness, contrast and saturation of current channel.
<b>10</b> PTZ	Pan/Tilt/Zoom Control.
<b>11</b> Main Menu	Access the main menu.
<b>12</b> Lock	Enable/Disable Lock Screen. Sign in to Unlock.
<b>13</b> 4-Channel Display	Displays 4 video channels.
<b>14</b> 9-Channel Display	Displays 9 video channels.
<b>15</b> N-Channel Display	Displays 6/8/10/13/14 video channels.
<b>16</b> Screen Mode	Switch between different display modes: Single channel, Sequence, and Split Mode.
<b>17</b> Sound	Adjust the volume. Mute On/Off.
<b>18</b> Playback	Playback DVR recordings.
<b>19</b> Information	See for system information.

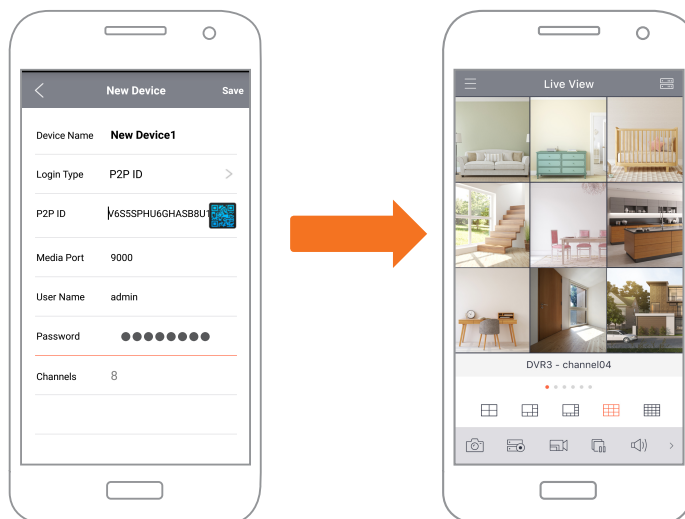
# Remote Viewing App

Once you've set up your system, you can install the WiseView app for remote viewing and access to your cameras from anywhere, anytime.

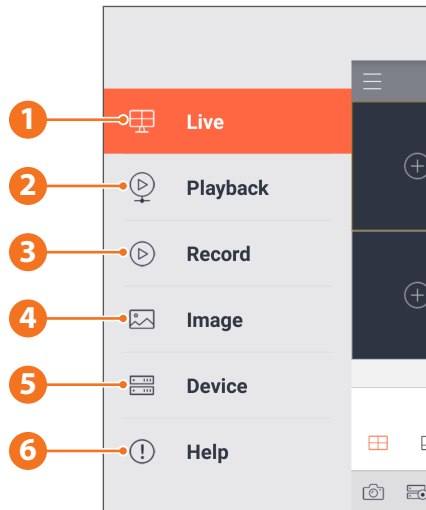
1. Open Google Play or the App Store and download the free Wiseview app.
2. Once installed, open the WiseView app.
3. Tap the dropdown menu and select Device
4. Tap [+ ] to add a new device. Under Device Name, create a name for your DVR.
5. Select a Login Type - IP/Domain, P2P ID, Product ID. (The following steps applies only to the QR code setup. For more information about IP/Domain and Product ID login, refer to the user manual.)
  - ✓ QR Code only works with P2P ID Login.
6. Tap the QR code image next to P2P ID. Scan the QR code either on the Information page on your monitor or top of the DVR. (See image below)



7. Enter in the Media Port, User Name, and Password.  
If you want change the default port, you must manually enter the new port number.
8. Tap "Save" when finished to connect to the DVR.



# App Interface



1. Live view of connected cameras



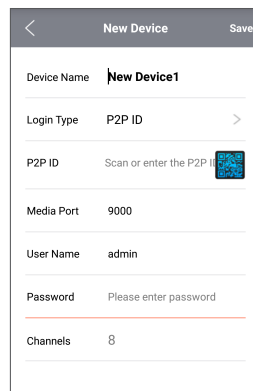
2. Playback recordings



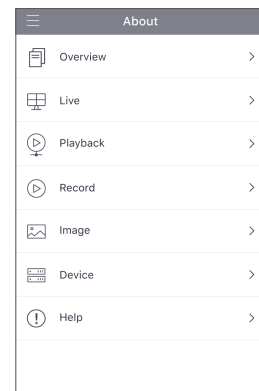
3. View recorded video footage



4. View captured images

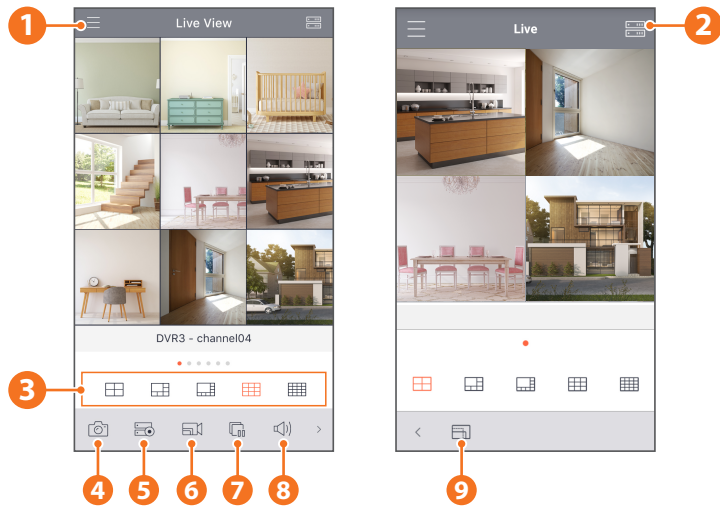


5. View the device(s) connected to the app and add new device(s)

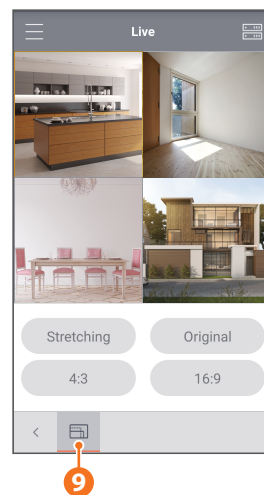
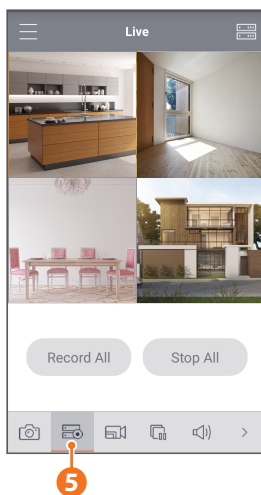
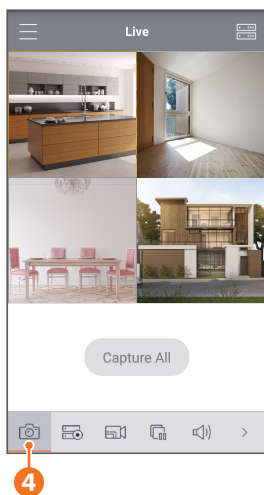


6. For more information about the app

# App Interface



- 1 Main Menu
- 2 Device List
- 3 4/6/8/9/16 Split Screen
- 4 Capture
- 5 Record
- 6 Video Stream Mode
- 7 Start/Stop Live Stream
- 8 Mute On/OFF
- 9 Screen Size Format: Stretching, Original, 4:3, and 16:9

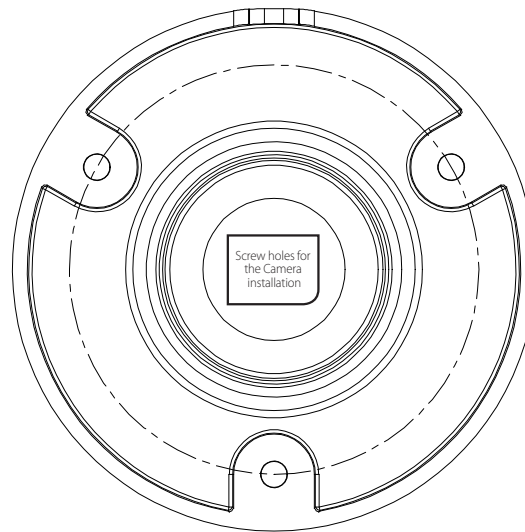


# Camera Installation Template

To make camera installation easier, you can tear off this page and adhere it to the place you would like to install your cameras.

## TEMPLATE

This template is used to install the camera on the wall



**CAMERA FRONT**



**SAMSUNG**  
wiseNET